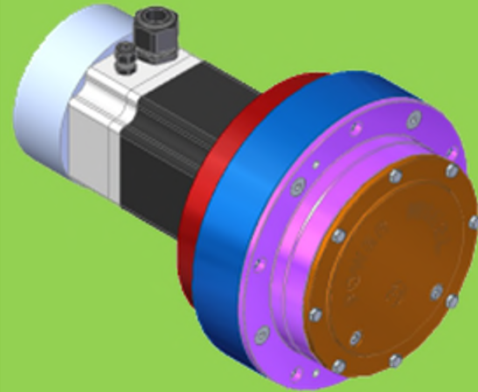




## Agricultural / AGV Wheel Motor



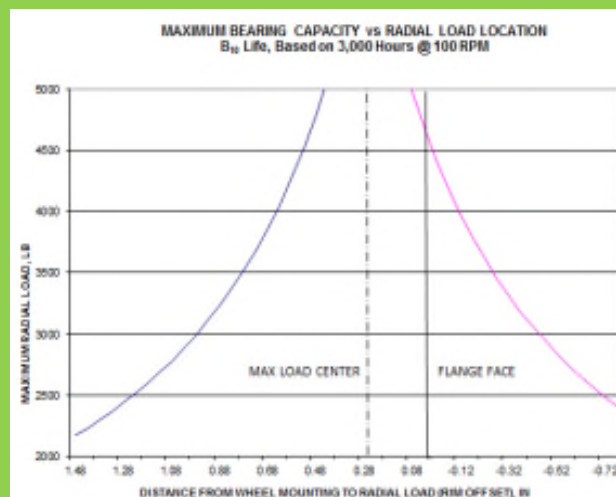
### Gearbox Characteristics

Max Intermittent Output Torque	10,000 lb-in
Max Input Speed	5000 rpm
Approximate Weight	58 lbs
Approximate Oil Capacity	10 oz
Input Shaft	13T 32/64
Ratios	25.09:1 / 49.08:1

### Mounting

Frame Mounting – 3/8-16UNC on 7.500" BC (Qty 6)

Wheel Mounting – M12 x 1.5 on 8.500" BC (Qty 5)



**Motor Can Be Modified To Meet Your Project Specifications**