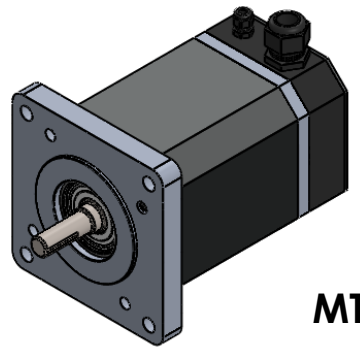
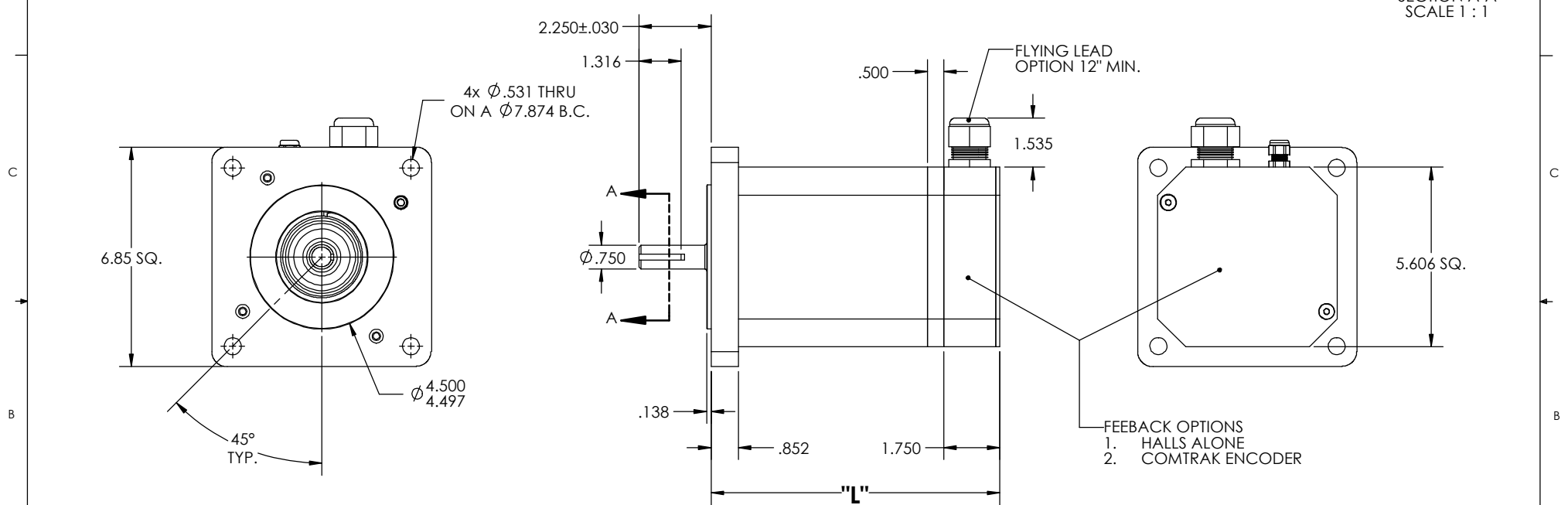
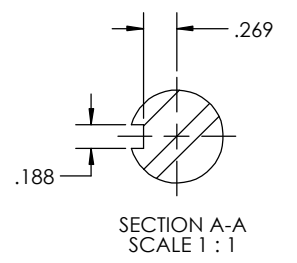


MOTOR LENGTHS	
STACK SIZE	LENGTH "L"
1 STACK	6.016
2 STACK	7.016
3 STACK	8.016
4 STACK	9.016
5 STACK	10.016
6 STACK	11.016

MOTOR MODEL	MAX VOLTAGE (V)	MAX SPEED (RPM)	MAX CONTINUOUS TORQUE (LB-IN)	MAX PEAK TORQUE (LB-IN)	MAX OPERATING TEMP (C°)
MT142-1	325	4000	65	215	145
MT142-2	325	4000	130	430	145
MT142-3	325	4000	195	645	145
MT142-4	325	4000	260	860	145
MT142-5	3.25	4000	325	1075	145
MT142-6	325	4000	390	1290	145



**MT142, 8 POLE**

- OTHER OPTIONS AVAILABLE UPON REQUEST:**
- FRONT SHAFT SEAL
  - THERMOSTAT OR THERMISTOR

REVISIONS			
DESCRIPTION	REV.	DATE	APPV'D
5 and 6 Stack configurations Added	P2	11/07/2017	JAL

**PROPRIETARY AND CONFIDENTIAL**  
 THE INFORMATION CONTAINED IN THIS DRAWING IS CONFIDENTIAL AND THE SOLE PROPERTY OF TRU TECH SPECIALTY MOTORS. ANY REPRODUCTION IN PART OR AS A WHOLE WITHOUT THE WRITTEN PERMISSION OF TRU TECH SPECIALTY MOTORS IS PROHIBITED.

UNLESS OTHERWISE SPECIFIED	
DIMENSIONS:	Inches [MILLIMETERS]
TOLERANCES:	LINEAR X.XX: ±.01 [.25] LINEAR X.XXX: ±.005 [.13] ANGULAR: ± 1/2°
MATERIAL	MT142
FINISH	
PROJECT	FASTRACK
STATUS	ACTIVE

TruTech Specialty Motors					
SIZE	TITLE:				
<b>B</b>	MT142 SERIES				
	DATE	SIGNATURE	PART NUMBER:		
	08/10/2016	JAL	53-XXXX		
					P1 REV
					SCALE:1:3 SHEET 1 OF 1