

Motor / Drive				
Property	Symbol	Units	Value	Tolerance
Buss Voltage	Vb	Volts	80	MAX
Max Operating Speed	Sr	RPM	6000	MAX
Peak Current	Ip	A MAX	20	MAX
Continuous Current	Ic	A MAX	12	MAX
Winding Temperature	deg C	deg C	145	MAX

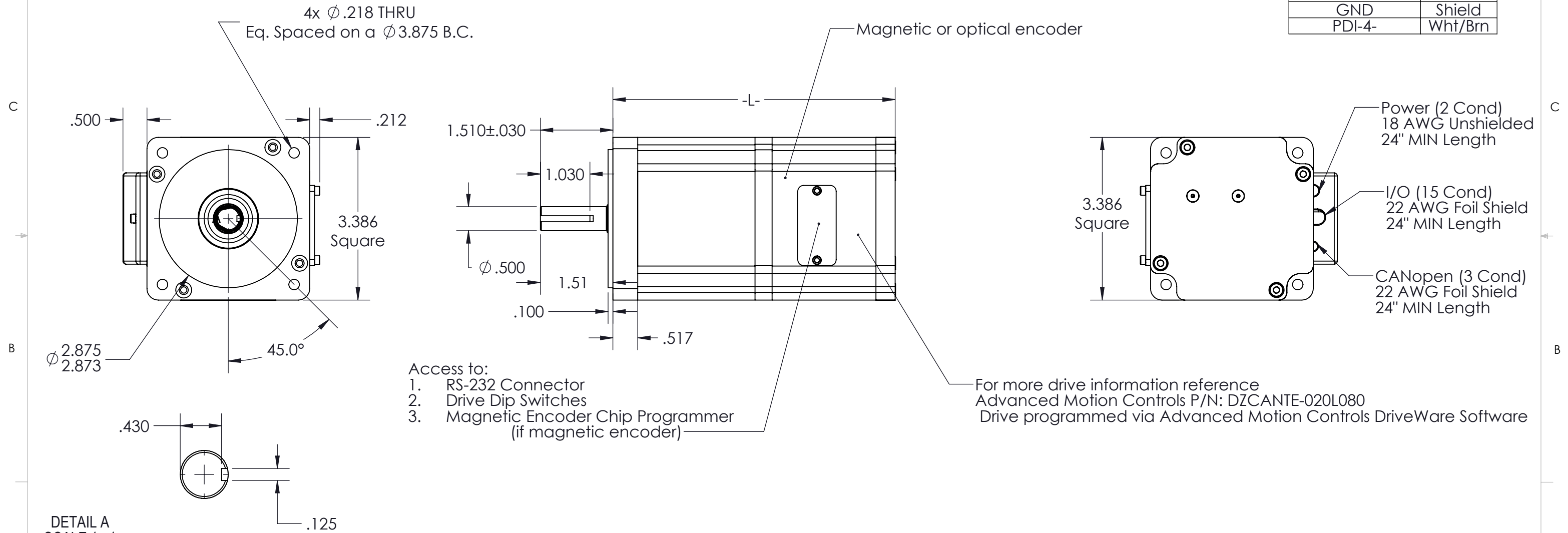
RS-232 Pinout	
Pin	Function
1	Receive Line
2	Transmit Line
3	GND

Mating Conn.
Phoenix 1881338

CANopen Cable	
Function	Color
GND	Blk
CAN_Low Bus Line	Brn
CAN_H Bus Line	Red

Motor Power Cable	
Function	Color
High Voltage	Red
GND	Black

I/O Cable	
Function	Color
+5 Logic	Red
GND	Blk
PDI-3	Wht
PAI-1 + (REF +)	Org
PDI-2	Blu
PAI-1 - (REF -)	Wht/Org
PDI-1	Grn
PDO-3	Wht/Red
GND	Gray
PDO-2	Wht/Blk
PDI-5+	Yel
PDO-1	Violet
PDI-5-	Wht/Yel
PDI-4+	Brn
GND	Shield
PDI-4-	Wht/Brn



DETAIL A
SCALE 1:1

Motor Lengths	
Stack Size	Length -L- [in]
1 Stack (Shown)	5.875
2 Stack	7.056
3 Stack	8.237
4 Stack	9.418

4 or 8 Pole Option Available

UNLESS OTHERWISE SPECIFIED:		TruTech Specialty Motors		
DIMENSIONS: INCHES [Millimeters]		NAME	DATE	TITLE:
TOLERANCES: ANGULAR: $\pm 1/2^\circ$ TWO PLACE DECIMAL $\pm .01$ [.25] THREE PLACE DECIMAL $\pm .005$ [.13]		DRAWN	CR	5/23/2016
Motor Class Nema 34/86 Series		CHECKED		
Production Level: Active		ENG APPR.		
Material:		PROPRIETARY AND CONFIDENTIAL THE INFORMATION CONTAINED IN THIS DRAWING IS CONFIDENTIAL AND THE SOLE PROPERTY OF TRU TECH SPECIALTY MOTORS. ANY REPRODUCTION IN PART OR AS A WHOLE WITHOUT THE WRITTEN PERMISSION OF TRU TECH SPECIALTY MOTORS IS PROHIBITED.		
Project: Motor Drive				
		SIZE B	Part Number: 53-XXXX	REV A
		SCALE: 1:2		SHEET 1 OF 1