

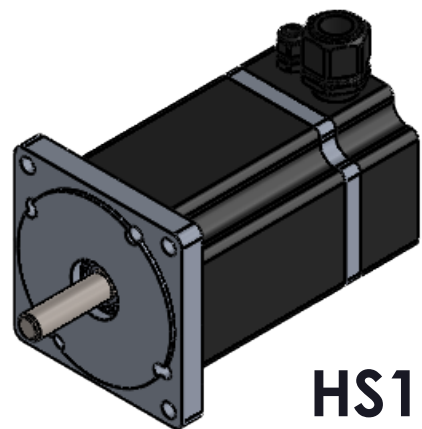
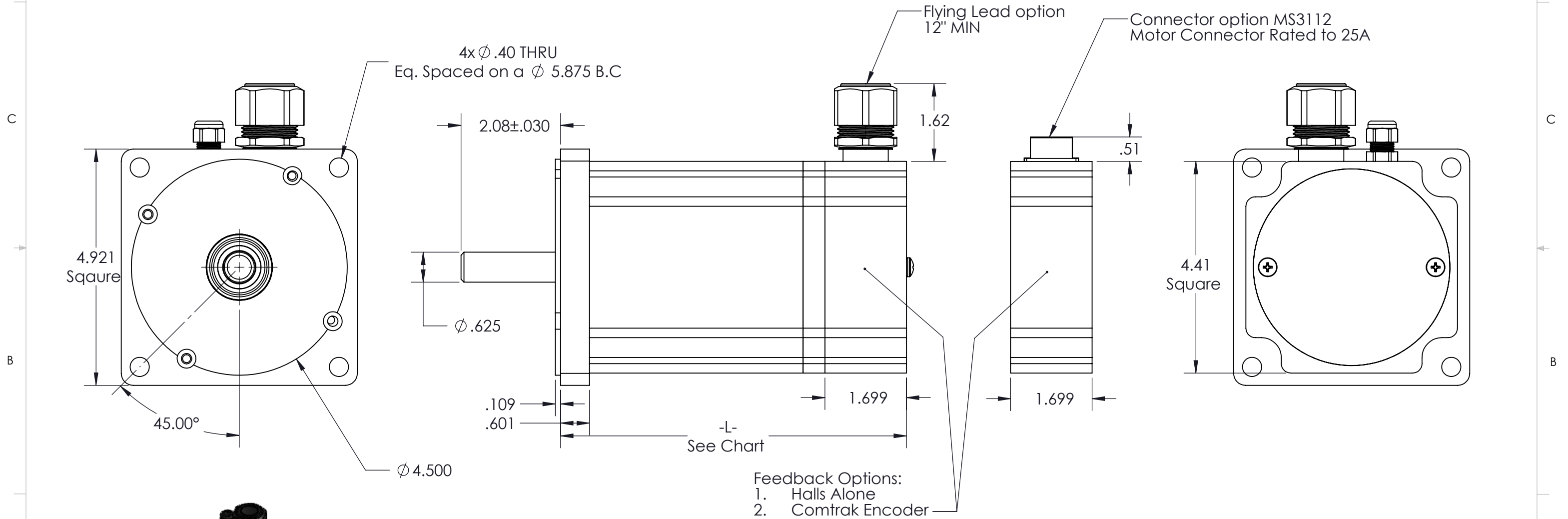
Motor Lengths	
Stack Size	Length -L- [in]
1 Stack	5.812
2 Stack (Shown)	7.210
3 Stack	8.608
4 Stack	10.006

MOTOR MODEL	MAX VOLTAGE (V)	MAX SPEED (RPM)	MAX CONTINUOUS TORQUE (LB-IN)	MAX PEAK TORQUE (LB-IN)	MAX OPERATING TEMP (C°)
HS110-1	325	8000	20	50	145
HS110-2	325	8000	40	100	145
HS110-3	325	8000	60	150	145
HS110-4	325	8000	80	200	145

Other options available upon request:

- Front shaft seal
- Thermostat or Thermistor

◇ HS110 2 Stack Shown



HS110, 4 Pole

UNLESS OTHERWISE SPECIFIED:		<i>TruTech Specialty Motors</i>		
DIMENSIONS: INCHES [Millimeters]		NAME	DATE	TITLE:
TOLERANCES:		DRAWN	CR	05/16/2016
ANGULAR: ±1/2°		CHECKED		
TWO PLACE DECIMAL ±.01 [.25]		ENG APPR.		
THREE PLACE DECIMAL ±.005 [.13]		PROPRIETARY AND CONFIDENTIAL		
Motor Class	HS110	THE INFORMATION CONTAINED IN THIS DRAWING IS CONFIDENTIAL AND THE SOLE PROPERTY OF TRU TECH SPECIALTY MOTORS. ANY REPRODUCTION IN PART OR AS A WHOLE WITHOUT THE WRITTEN PERMISSION OF TRU TECH SPECIALTY MOTORS IS PROHIBITED.		
Production Level:	Active	SIZE	Part Number:	REV
Material:		B	53-XXXX	A
Project:	FastTrack	SCALE: 1:5	SHEET 1 OF 1	