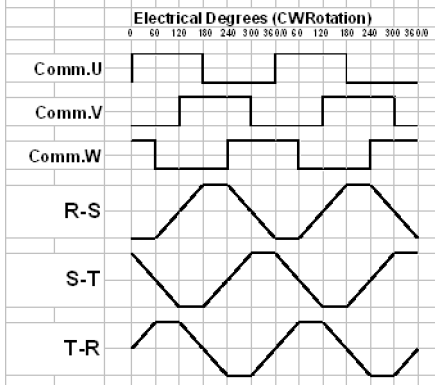
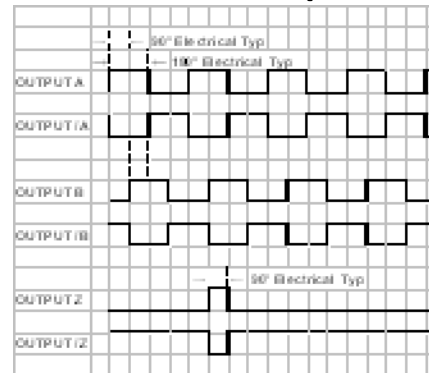


MOTOR CHARACTERISTICS @25°C			
	TOL.	UNITS	VALUE
MAX. OPERATING SPEED (S <sub>nl</sub> )	MAX.	R.P.M.	6000
CONTINUOUS TORQUE (T <sub>c</sub> )	MAX.	LB-IN	9.0
PEAK TORQUE (T <sub>p</sub> )	MAX.	LB-IN	30.0
TORQUE SENSITIVITY (K <sub>t</sub> )	±10%	LB-IN/AMPS	1.64
BACK EMF CONSTANT (K <sub>e</sub> ) (L-L, Pk.)	±10%	V/K R.P.M.	20
D.C. RESISTANCE (R <sub>t</sub> ) (L-L)	±10%	OHMS	1.87
INDUCTANCE (L) (L-L)	±15%	mH	2.0
DAMPING TORQUE (T <sub>d</sub> )	NOM.	LB-IN/KRPM	.02
FRICITION TORQUE (T <sub>f</sub> )	NOM.	LB-IN	.1
ROTOR INERTIA (J <sub>a</sub> )	NOM.	LB-IN-SEC <sup>2</sup>	.0003
WINDING TEMPERATURE	MAX.	°C	125
WEIGHT	NOM.	LBS	3.1
NUMBER OF MOTOR POLES	NOM.		8

### 120 Degree Timing Diagram



### Encoder Timing

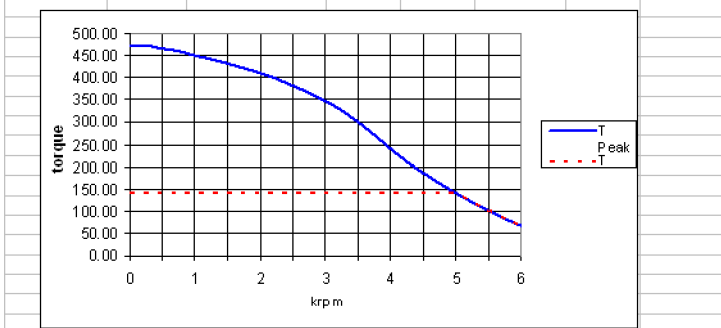


### REVISIONS

REV	DESCRIPTION	DATE
P1	Preliminary	04/01/11
P2	Revised and added data	12/07/11
P3	Added pinout and thermostat data	12/14/11

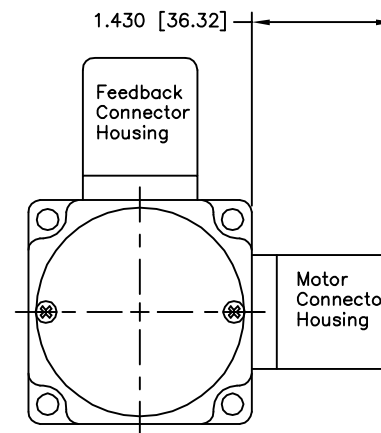
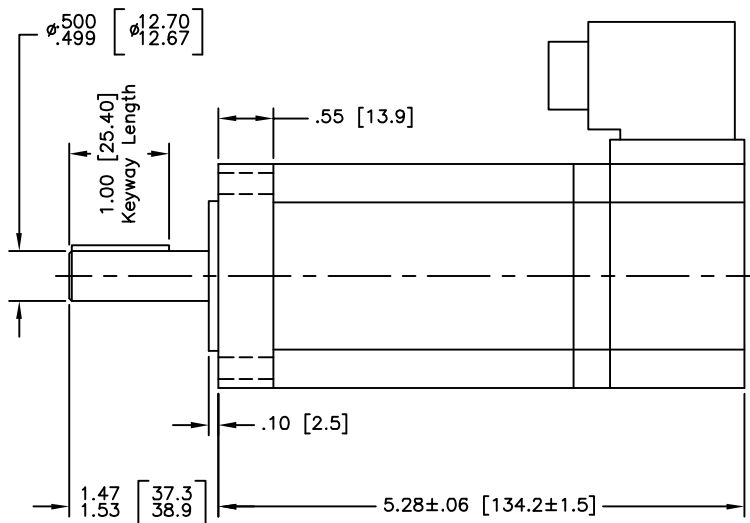
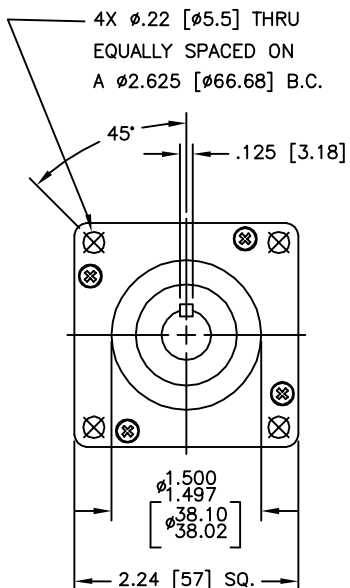
### Feedback Connector

Pin	Function
A	Therm
B	Therm
C	V
D	Z
E	/Z
F	A
G	/A
H	GND
J	N.C.
K	+5V
L	N.C.
M	U
N	B
P	/B
R	W
S	N.C.
T	N.C.
U	N.C.
Y	N.C.



Calculated performance with 150v Bus, 5.5A cont, 18.3A Pk

NOTE: Snap action thermostat emebdded in motor winding. Normally closed, opens at 135°C



### Motor Connector

Pin#	Function
1	Phase R
2	Phase S
3	Phase T
4	Case Gnd

DIMENSIONS: INCHES [MILLIMETERS]

**TruTech Speciality Motors**

TITLE	MT0572k20-E1000B	
TOLERANCES ON DECIMALS	XX ±.010 [0.25]	NUMBER 53-0128-ES
	XXX ±.005 [0.13]	
ANGLES ±1/2°	SCALE 1:1	SHEET 1 of 1

Note: Connectors not shown in this view